



## POTABLE WATER TANK MIXERS

CertiSafe™ Active Tank Mixers blend drinking water in tanks and reservoirs quickly and efficiently. These powerful mixing systems create an environment homogeneous in chemical concentration and temperature, improving water quality from tank to tap.



**There's Sort of Safe, or There's CertiSafe.**



Contact us today to learn more | 715.262.4488 | [kascomarine.com/certisafe](http://kascomarine.com/certisafe)

# CERTISAFE™ TANK MIXERS

## A NEW MOVEMENT IN WATER

### WATER QUALITY CHALLENGES

When drinking water is not mixed quickly, evenly, and continuously, it can fall out of EPA compliance, putting the health and safety of your community in danger. Common problems include:

- Thermal and chemical stratification
- Residual loss
- Biofilm buildup
- Nitrification
- Disinfection by-products
- Development of ice caps
- Sediment accumulation



### CERTISAFE IS THE SOLUTION

By creating strong, consistent circulation, CertiSafe™ Tank Mixers quickly and evenly move water while eliminating common water quality problems. Available in several HP sizes, multiple mounting orientations, and various control panels, there is a CertiSafe Mixing solution for nearly every size and style of tank. See back page for mounting option and control panel information.



1/2, 3/4, 1, &  
2HP Available



120V, 208-240V, &  
Solar-Powered Options



3-Year Warranty  
*Optional 5-year Extended Warranty*



ETL Listed to CSA  
and UL Standards



NSF/ANSI/CAN  
61 & 372 Certified



### FASTEST BLEND TIMES

Complete blending in 30 mins - 4 hrs.



### LONGEST LASTING MOTORS

Food-grade mineral oil keeps motors cooler so they last longer.



### ENGINEERED TO PERFORM

Each HP uses a specific prop to maximize performance.



### DURABLE & REBUILDABLE

Units are rebuildable and repairable, keeping costs to a minimum.

## CERTISAFE™ SPECIFICATIONS

TANK SIZE	SUPPLY / VOLTAGE	PHASE / HZ	UNIT SIZE (HP)	MIXER MODEL	CABLE LENGTH (FT)	CABLE GAUGE	AMPS	LOCK ROTOR AMPS	THRUST (LBS)
Up to 1MG	120	1 / 60HZ	1/2	2400C61	50	16	5.7	12	31
					75	14			
					100	14			
					150	<b>12</b>			
					200	<b>12</b>			
Up to 2.5MG	120	1 / 60HZ	3/4	3400C61	50	16	7	18	36
					75	14			
					100	14			
					150	<b>12</b>			
					200	<b>12</b>			
	208-240	1 / 60HZ	3/4	3400HC61	50	14	3.5	9	36
					75	14			
					100	14			
					150	<b>12</b>			
					200	<b>12</b>			
Up to 5MG	120	1 / 60HZ	1	4400C61	50	14	9.1	40	44
					75	14			
					100	<b>12</b>			
					150	<b>10</b>			
					200	<b>10</b>			
	208-240	1 / 60HZ	1	4400HC61	50	14	4.5	20	44
					75	14			
					100	14			
					150	<b>12</b>			
					200	<b>12</b>			
5MG & Over	208-240	1 / 60HZ	2	8400C61	50	14	9	40	56
					75	14			
					100	<b>12</b>			
					150	<b>12</b>			
					200	<b>12</b>			

#### Product Notes:

1. Cable gauges in bold indicate quick disconnect included on power cable.
2. Mounting option and control panel sold separately. See next page for details.



## CONTROL & MONITOR

Monitor your CertiSafe™ Mixer with various control panels that feature H-O-A control, indicator LED, and SCADA I/O for remote operation.



CS-100 / CS-200



CS-150 / CS-250

## MOUNTS

Several mounting options to fit your tank, tower, or reservoir needs.



Floor Mount



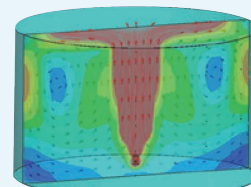
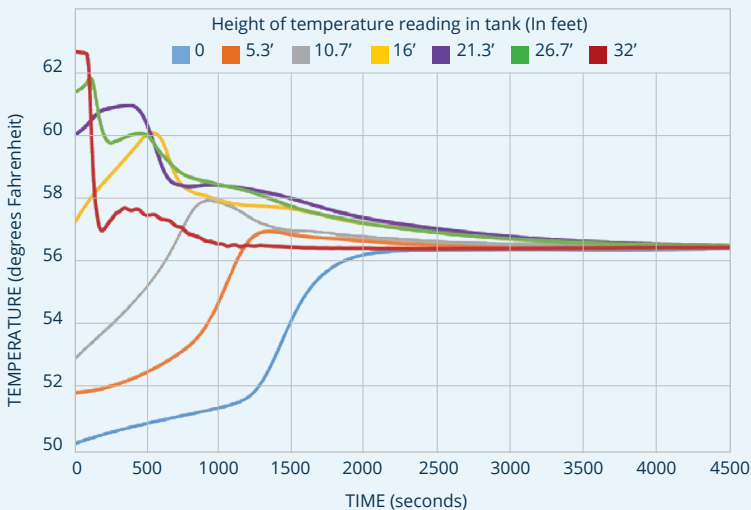
Pipe Mount



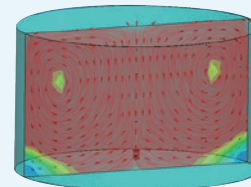
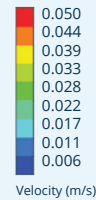
Suspended Mount

## MIXING CAPABILITIES

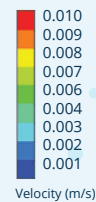
Computational fluid dynamics (CFD) and test results using a 3/4HP CertiSafe unit to mix a .5-million-gallon tank show complete mixing in under an hour.



Velocity representation



CFD indicating tank can be thoroughly mixed over time



## KASCO KNOWS WATER

For more than 50 years, Kasco has developed and deployed water circulators that run reliably in the toughest conditions. The CertiSafe™ Tank Mixer is built on this foundational platform and continues the Kasco tradition of innovation, performance, and excellence in the water quality industry.

